

## AT-HPF-1640TF1

2022-3-21

## 16.5-40GHz High Pass Filter, 2.92mm



### Product Overview

AT Microwave offers high performance coaxial filter from low frequency to 67GHz, including BPF-Band Pass Filter, LPF-Low Pass Filter and HPF-High Pass Filter.

These filters are based on MMIC technology with small size and fast delivery time. Both RF1 and RF2 can be used as Input or output port. Other connector is available according to request.

More information, please visit [www.atmicrowave.com](http://www.atmicrowave.com)

### Advantages

- ✓ Low Insertion Loss
- ✓ Good Return Loss
- ✓ High Stop Band Suppression
- ✓ Sharp Roll-Off

### Application

- ✓ Automotive Radar Test
- ✓ FOD (Foreigner Objects Debris)
- ✓ Test Equipment
- ✓ ROF (RF Over Fiber)
- ✓ Radar System

### Key Features

Parameter	Min	Typical	Max
Passband Frequency		16.5-40GHz	
Passband Insertion Loss		-1.6 dB	-3.5dB
Passband Return Loss	-8dB	-15 dB	
Rejection@ 14GHz	-20	-30dB	
Rejection@ 12GHz	-35	-40dB	
Spec Temp		25C	





# AT-HPF-1640TF1

Coaxial High Pass Filter

## Mechanical Information

Item	Description
RF1 Port	2.92mm Female
RF2 Port	2.92mm Male
Case Material	Brass
Finish	Gold Plated
Weight	25g
Size:	See outline

## Absolute Maximum Ratings Table

Parameter	Value
RF Power	+30dBm
Operating Temperature	-40 to +85C
Storage Temperature	-65 to +150C

## Part Number Selection Guide

Item	Description
Part Number	In Default, Female to Male
Part Number-FF	RF1=Female, RF2=Female
Part Number-MM	RF1=Male, RF2=Male

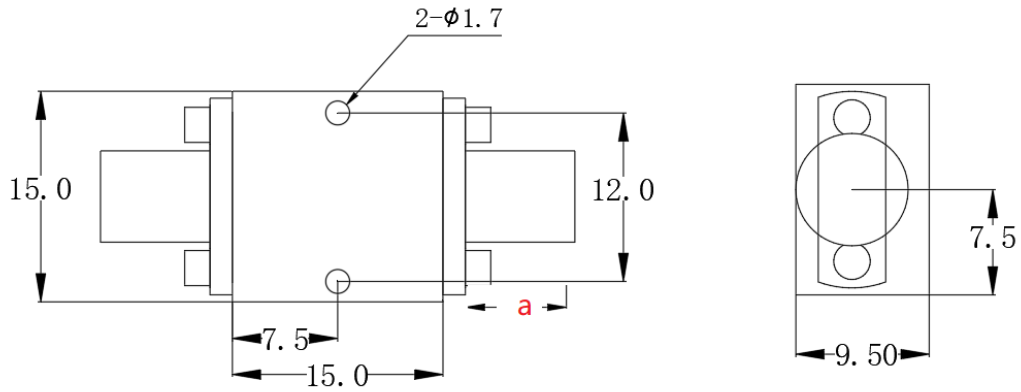
## Test Result

Performance may vary slight from unit to unit.

To be added.



## Dimension ( mm)



	<26.5GHz	<40GHz	<50GHz	<67GHz
Connector	SMA	2.92mm	2.4mm	1.85mm
Lenth of a	9.4mm	9.5mm	10.8mm	11.3mm

Note: Female Default. Contact with us for other types.

